



Get serious

This is the bike that sets the standard in the middleweight class. With new bodywork and enhanced features for 2013, the XJ6 is one of our most popular bikes, because it combines outstanding all-round performance with easy handling and sharp looks.

Its compact chassis features a lightweight tubular frame with a low seat height, which makes for easy handling and enhanced agility. At the heart of this versatile motorcycle is a rapid and reliable 600cc inline 4-cylinder engine that delivers smooth power for strong acceleration.

And to complete this winning package the XJ6 benefits from dual front discs and sleek new sidepanels, as well as a midship muffler and a new grab bar.

- ▶ 600cc inline 4-cylinder engine
- ▶ Special version of the XJ6
- ▶ Compact chassis for easy handling
- ▶ Carbon-look parts and black/grey colour scheme
- ▶ Low seat height for easy low-speed manoeuvrability
- ▶ A leading middleweight all-rounder
- ▶ Under seat storage for a U-lock
- ▶ New bodywork and detail changes for 2013



Yamaha XJ6. Pure riding pleasure!

The 600cc category is one of biking's most popular classes. Check out the XJ6 and you can see why! Just like every Yamaha, the XJ6 has been carefully designed and manufactured to deliver pure riding pleasure. We call it the Art of Engineering. And it makes a real difference.

It's all about attention to detail. So we created a compact chassis with a low seat height for easier manoeuvrability in town. And the gutsy 600cc engine has been built to deliver strong performance at low and high speeds, making the XJ6 a genuine all-rounder.

If you're looking for performance, agility and day to day versatility, the XJ6 ticks all the boxes.





Free-revving performance

At the heart of the XJ6 there's a powerful 600cc inline 4-cylinder engine that develops super-smooth performance. Whether you're riding around town or enjoying a blast on the open road, this rapid and reliable engine delivers plenty of useable power. And with a lightweight 4-into-1 exhaust and midship muffler, it looks as good as it sounds.

Agile handling performance

One of the most significant features on the XJ6 is its compact tubular chassis, which helps to minimise the bike's overall weight and dimensions for agile roadholding. And the low seat height of just 785mm allows riders to get their feet on the ground with ease for improved low-speed manoeuvrability.

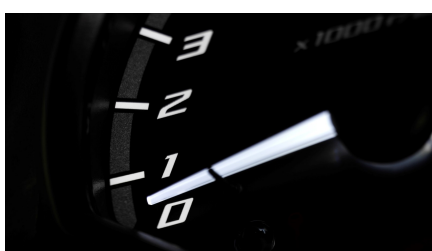


Special colour

The XJ6 is already one of the most stylish naked bikes in the popular 600 class – and with its cool new black/grey colour scheme this outstanding all-rounder looks so good from any angle. Running with special carbon-look frame guards and tank panels – as well as jet black wheels and a bold number 6 logo on the sidepanels – the SP model is the ultimate XJ6.

Durable and stylish storage

The XJ6 is a true middleweight all-rounder which is designed to be used for a wide variety of roles. Yamaha offer an optional sturdy rear carrier and 39 or 50-litre topcase suitable for anything from sports kit, an overnight bag or shopping. And for added security there's a U-lock storage space under the seat.



Racing-style instrumentation

The XJ6's racing-style instrument console features an easy-to-read analogue tachometer on the right, and a multi-function digital display which includes a speedometer on the left. And for added visibility at night the console benefits from white LED backlighting and a luminous white tachometer needle.

First-class comfort

This bike is designed to be ridden whenever the mood takes you, and to ensure you experience first class comfort every time, the XJ6 is equipped with adjustable handlebars. Combined with the low dual seat and the sculpted fuel tank, this allows you to create the most ergonomic riding position for greater riding pleasure.



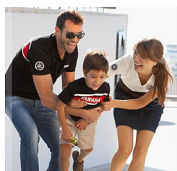
<i>Engine</i>	
Engine type	liquid-cooled, 4-stroke, DOHC, forward-inclined parallel 4-cylinder, 4-valves
Displacement	600cc
Bore x stroke	65.5 mm x 44.5 mm
Compression ratio	12.2 : 1
Maximum power	57.0 kW (77.5PS) @ 10,000 rpm
Maximum Torque	59.7 Nm (6.1 kg-m) @ 8,000 rpm
Lubrication system	Wet sump
Carburettor	Electronic Fuel Injection
Clutch Type	Wet, Multiple Disc
Ignition system	TCI
Starter system	Electric
Transmission system	Constant Mesh, 6-speed
Final transmission	Chain

<i>Chassis</i>	
Frame	Diamond Shaped
Front suspension system	Telescopic forks
Front travel	130 mm
Caster Angle	26°
Trail	103 mm
Rear suspension system	Linked monoshock with spring preload adjustment
Rear Travel	130 mm
Front brake	Hydraulic dual disc, Ø 298 mm
Rear brake	Hydraulic single disc, Ø 245 mm
Front tyre	120/70 ZR17M/C (58W)
Rear tyre	160/60 ZR17M/C (69W)

<i>Dimensions</i>	
Overall length	2,120 mm
Overall width	770 mm
Overall height	1,085 mm
Seat height	785 mm
Wheel base	1,440 mm
Minimum ground clearance	140 mm
Wet weight (including full oil and fuel tank)	205 kg / ABS 210 kg
Fuel tank capacity	17 litres
Oil tank capacity	3.4 litres

Colours**Competition White***Featured accessories***39L Top Case City****39L Top Case City
Inner Bag****39L Top Case City
Passenger Backrest****39L/50L Top Case City
Lock Set****39L/50L Top Case City
Universal Mounting
Plate****50L Top Case City**

For all XJ6 SP accessories go to the website, or check your local dealer

**The Yamaha Chain of Quality**

Yamaha technicians are fully trained and equipped to offer the best service and advice for your Yamaha product. For this reason, Yamaha strongly recommends visiting an official Yamaha dealer for all your service requirements.

Yamaha Genuine Parts & Accessories are especially developed, designed and tested for our Yamaha product range. Yamaha also recommends the use of Yamalube®, our own range of high-tech lubricants, the lifeblood of Yamaha engines. They are developed to carry on working effectively, no matter where you ride.

Besides functional and style accessories, Yamaha offers a range of high quality, innovative riding gear designed to keep you comfortable and protected. An extensive range of casual wear is also available. For more information go to:

www.yamaha-motor-acc.com



Experience more of the
Yamaha XJ6 SP with your mobile

Yamaha Motor Europe
Koolhovenlaan 101
1119 NC Schiphol-Rijk
The Netherlands